

USB2.0

128MB–2GB JetFlash™

User's Manual

P/N TS128M-2GJF110

Transcend

*Your Supplier, Your Partner,
Your Friend.*

Table of Contents

Introduction

Package Contents.....	1
Features.....	1
System Requirements	1

Driver Installation

Driver Installation for Windows 98SE	2
Driver Installation for Windows Me, 2000, and XP	2
Driver Installation for Mac OS 9.0 or Later	2
Driver Installation for Linux Kernel 2.4 or Later	2

Partition & Security Function

Partition Types	3
Access Data in the Security Area	5
Log Out of Security Area.....	6
Change Password.....	6
If You Forget the Password.....	8

PC-Lock Function

PC-Lock Function for Windows 98SE, Me, 2000, and XP	8
Lock Your Computer.....	9
Unlock Your Computer	9

Boot-Up Function

System Requirements for Boot-Up Function	10
Boot-Up Function for Windows 98SE and Me	10
Boot-Up Function for Windows XP	11

Recovery Function.....	13
------------------------	----

Remove JF-Utility	15
-------------------------	----

Safely Remove Your JetFlash

Remove JetFlash in Windows 98SE.....	15
Remove JetFlash in Windows Me, 2000, and XP	15
Remove JetFlash in Mac OS.....	15
Remove JetFlash in Linux.....	15

Troubleshooting.....	16
----------------------	----

Specifications.....	18
---------------------	----

Ordering Information.....	18
---------------------------	----

JetFlash Limited Warranty

Introduction

Thank you very much for purchasing Transcend's **JetFlash™**. This small device is designed to expedite the exchange of huge amounts of data between any desktop or notebook computer with a USB port. With a higher storage capacity and a much faster data transfer rates than other typical portable storage media, **JetFlash** can easily replace floppy diskettes and hard disks. In addition, its mobility, superior data retention ability, and impressive appearance will provide you with a brand-new data storage experience.

Package Contents

The **JetFlash** package includes the following items:

- **JetFlash**
- Neck Strap
- Driver CD
- USB Extension Cable
- Quick Installation Guide

Features

- Fully compatible with USB 2.0
- Easy Plug and Play installation
- PC-Lock Function: Makes **JetFlash** a key to your computer
- Boot-Up Function: Makes **JetFlash** a bootable device
- Partition & Security Function: Create a private partition with password protection
- Recovery Function: Restore **JetFlash** to its default settings
- Driverless (Only Windows® 98SE needs the enclosed driver)
- Powered via the USB port. No external power or battery needed
- LED indicates the usage status of the **JetFlash**

System Requirements

- Hardware: Desktop or notebook computer with USB port
- Operating System: Windows® 98SE, Windows® Me, Windows® 2000 or Windows® XP
Mac™ OS 9.0 or later, Linux™ Kernel 2.4 or later

Driver Installation

Driver Installation for Windows 98SE

1. Put the Driver CD into the CD-ROM drive (Auto-Run supported). Select the **Win98 Driver** button.



2. Follow the on-screen instructions to complete the driver installation.
3. Plug your **JetFlash** into an available USB port. A new **Removable Disk** drive with a newly assigned drive letter will appear in the **My Computer** window.

Driver Installation for Windows Me, 2000, and XP

No driver is required. These Windows operating systems have built-in drivers to support **JetFlash**. Simply plug **JetFlash** into an available USB port, and Windows will install the files needed to use your device. A new **Removable Disk** drive with a newly assigned drive letter will appear in the **My Computer** window.

Driver Installation for Mac OS 9.0 or Later

No driver is required. Just plug **JetFlash** into an available USB port and your computer will automatically detect it. A new Disk icon will appear on the **Desktop**.

Driver Installation for Linux Kernel 2.4 or Later

No driver is required. Just plug **JetFlash** into the USB port and mount it.

- Example:
1. First create a directory for **JetFlash**
`mkdir /mnt/jetflash`
 2. Mount **JetFlash**
`mount -a -t msdos /dev/sda1 /mnt/jetflash`

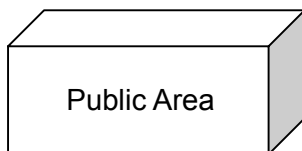
Partition & Security Function

Partition Types

You can partition **JetFlash** into two partition types. The two types are:

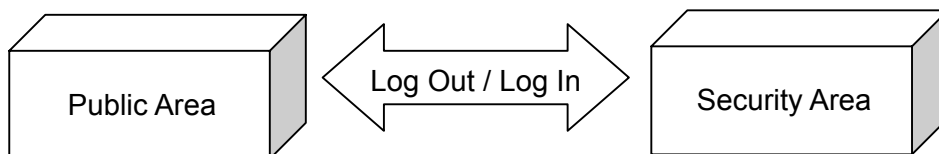
Type 1: “Public Area Only”

This is the default partition type for **JetFlash**. It allows the entire volume of **JetFlash** memory to be accessed by anyone. No secure data area is established.



Type 2: “Public and Security Area”

JetFlash is partitioned into a single Logical Unit Number (LUN) identified device, which contains a **Public Area** and a **Security Area**. Secure data can be established in the **Security Area**, which is protected by a password. Access to data in the **Public Area** is unrestricted.



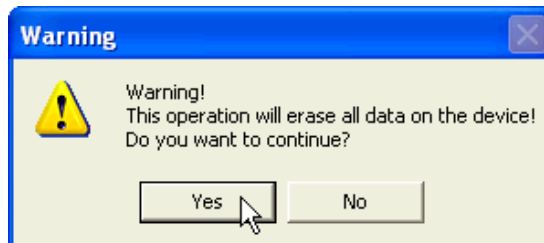
1. Put the Driver CD into the CD-ROM drive (Auto-Run supported). Plug your **JetFlash** into an available USB port of your computer and select the **JF-Utility** button.



2. Select the **Partition** button in the **JF-Utility** window.



3. The following window will appear. Select **Yes** to continue or **No** to stop.



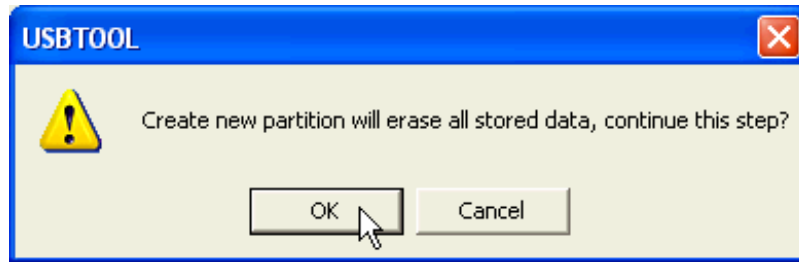
4. Select the partition type you need.

- a. To partition your **JetFlash** to the default type, i.e., “**Public Area Only.**” Choose the **Public Area Only**, and then select **OK**.
- b. To partition your **JetFlash** to “**Public and Private Area**” , select **Public and Private Area** and enter the memory sizes to be apportioned to the **Private Partition Area**.



- i. The minimum size apportioned to the **Private Partition Area** is 3MB, and the maximum cannot exceed or equal the **Total Storage Size**.
- ii. Key in a **New Password**. (Maximum size for a password is 8 characters.)
- iii. Key in a **Password Hint**, as a reminder in case you forget your password.
- iv. Select **OK**.


5. The following window will appear to warn you. Select **OK** to continue or **Cancel** to stop.

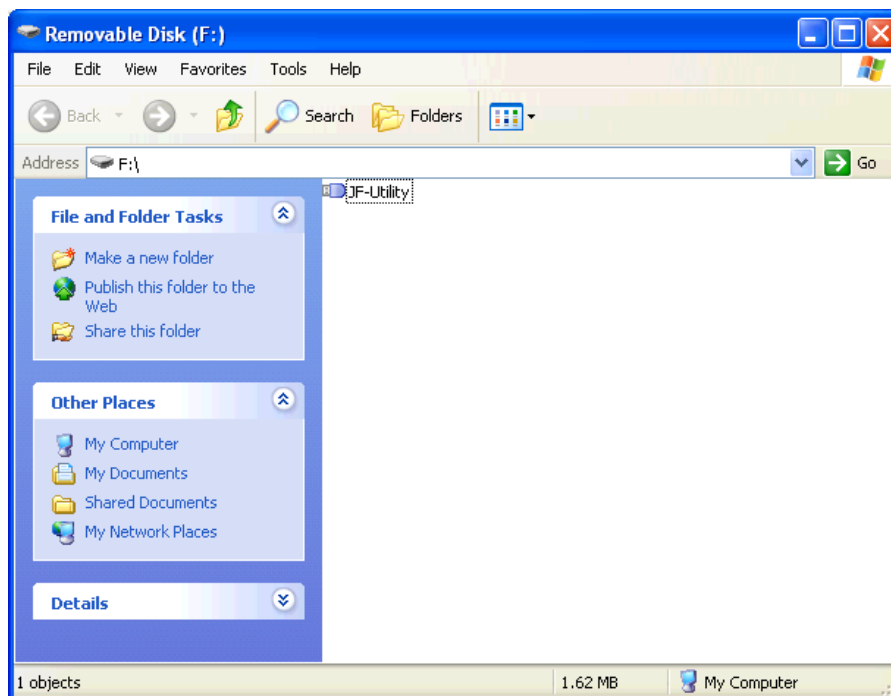


6. Once the partition is finished, the following window will appear. Select **OK**.



Access Data in the Security Area

1. Plug in your **JetFlash** and double-click the **JF-Utility.EXE** in **JetFlash**. The icon  will appear in the system tray and the following **JF-Utility** window will appear.



❖ After the partition function is finished, the **JF-Utility.EXE** file will be copied to the **JetFlash**. Please do not delete it. You can execute the JF-Utility function without the Driver CD by running the **JF-Utility.EXE** on any computer.

2. Select the **Login/out** button in the **JF-Utility** window.



3. The following window will appear. Enter the correct password and select **OK**.



❖ If a **Password Hint** was set up during the partition procedure, you can select the **Hint** button to display your **Password Hint** to help you to remember the password.

4. The **Removable Disk** window will now appear and the **Security Area** is ready for use.

Log Out of the Security Area

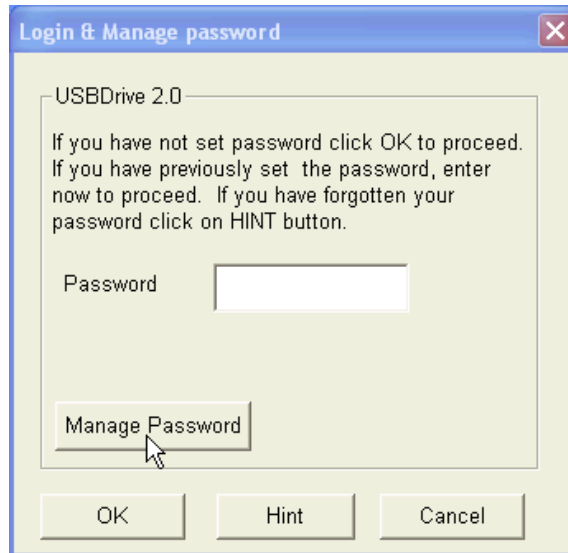
1. Make sure that all files are closed and that no data is being transferred to or from your **JetFlash**.
2. Click the **Login/out** button in the **JF-Utility** window. Once you have successfully completed the **Log Out** procedure for the **Security Area** of your **JetFlash**, only data in the **Public Area** will be accessible.

Change Password

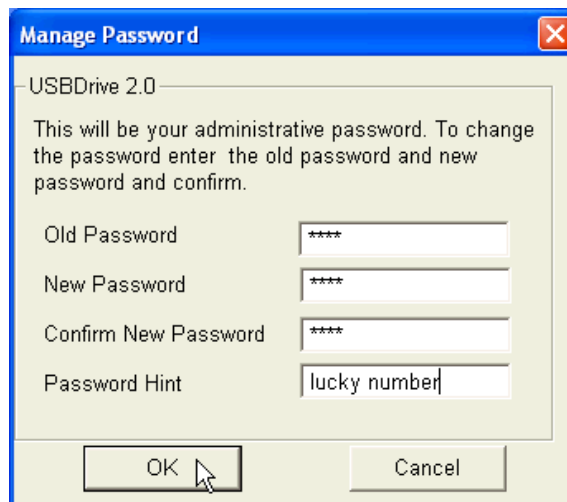
1. Select the **Login/out** button in the **JF-Utility** window.



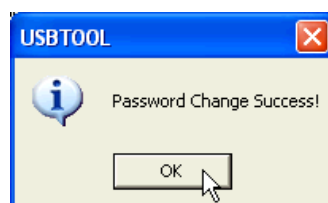
2. The following window will appear. Select the **Manage Password** button.



3. Input the **Old Password**, and **New Password** and the **Confirm New Password** in each field. (Maximum size for a password is 8 characters) You can also input a **Password Hint** to set up a reminder for your new password. Select **OK**.



4. The following window appears. Select **OK** to close this window.



If You Forget the Password

If you forget your password, you can use the password hint to remember it. If you cannot recall the password using the password hint, then all you can do is run the **Partition** function again to repartition your **JetFlash**. Unfortunately, all your “Private area” data will be lost during this procedure. You will have the chance to make a backup copy of your data in the “Public area” but all data in the “Private area” is permanently lost.

PC-Lock Function

Once the PC-Lock function is enabled, you can use your **JetFlash** as a key to lock your computer, protecting it from being used by other users.

- ❖ The PC-Lock function is not supported in Mac or Linux Operating Systems.
- ❖ To use the PC-Lock function, you must login into the Windows OS with **Administrator** rights.

PC-Lock Function for Windows 98SE, Me, 2000, and XP

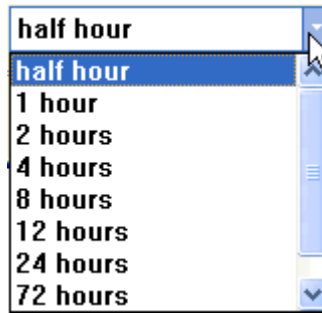
1. Select the **PC-Lock** button in the **JF-Utility** window.



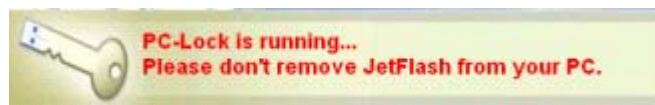
2. The following window will appear.



3. In this window you can select the **Protect Time** you want, change the **PC-Lock hint** and the **Font**.



4. Select the **OK** button to enable the PC-Lock function. If you want to lock your computer after shutdown, you can select **OK & ShutDown**. You can remove your **JetFlash** when the computer is turned off.
5. The following message will appear to show that the PC-Lock function is enabled.



Lock Your Computer

After the PC-Lock function is enabled, your computer will be locked whenever you remove your **JetFlash**. If your computer is locked, the screen will display the locked status as shown below.



Unlock Your Computer

To unlock your computer, you must re-insert your **JetFlash**. The locked status on the screen will disappear and you are now free to use your computer.

- ❖ The computer's locked status will be relinquished automatically after the lock time has expired.

Boot-Up Function

For systems that use Windows 98SE, Me, or XP, **JetFlash** can be configured to serve as an MS-DOS Boot Disk. Upon completion of this procedure, **JetFlash** can be used to boot-up your computer, allowing you to run MS-DOS programs. This does not make **JetFlash** a Rescue Disk for Windows, nor does it put Windows Startup files onto your **JetFlash**. After booting with **JetFlash**, if you wish to enter Windows, you must start Windows from your hard drive or a previously created Rescue Disk.

- ❖ The Boot-Up function is not supported in Windows 2000, Mac, or Linux Operating Systems.
- ❖ To use the Boot-Up function, you must login into the Windows OS with **Administrator** rights.

System Requirements for the Boot-Up Function

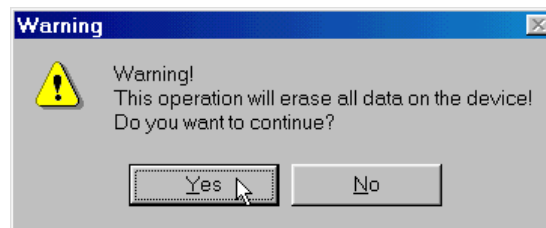
- A desktop or notebook computer that supports **USB-ZIP** or **USB-HDD** as the **First Boot Device** in **BIOS**
- **Windows 98SE, Me, or XP** located on the C: drive
- Any anti-virus programs must be turned off

Boot-Up Function for Windows 98SE and Me

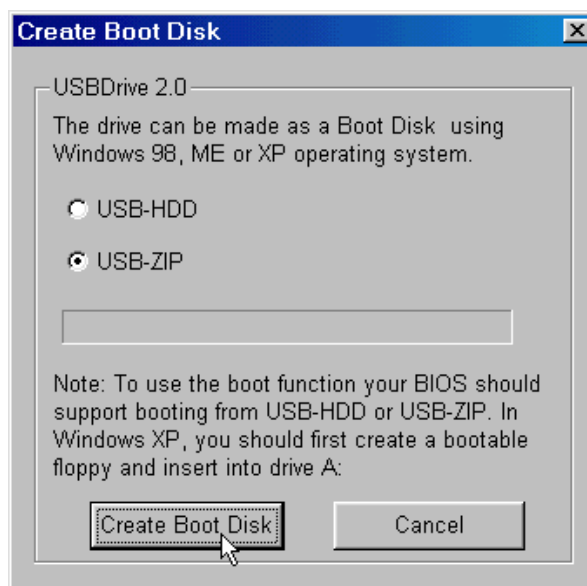
1. Select the **Boot-Up** button in the **JF-Utility** window.



2. The following window will appear. Select **Yes** to continue or **No** to stop

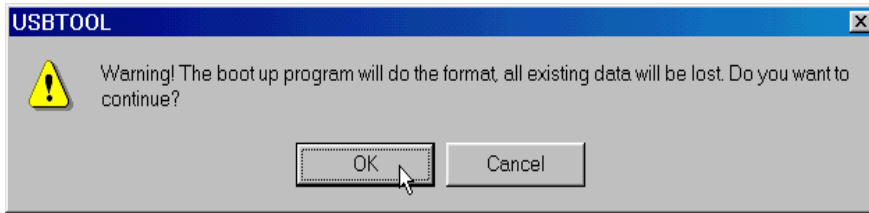


3. The following window will appear, choose the boot-up type you need (**USB HDD** or **USB ZIP**, whichever has been set as the **First Boot Device** in **BIOS**) and select **Create Boot Disk**.

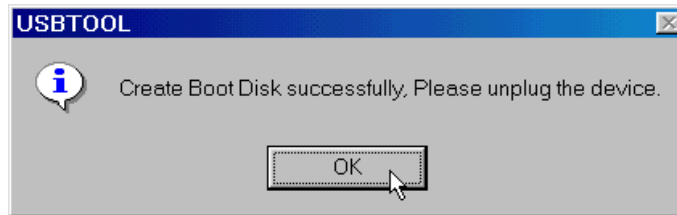


- ❖ **USB-HDD** boot-up type is not supported in Windows Me.

4. The following message will appear. Select **OK** to continue or **Cancel** to exit.



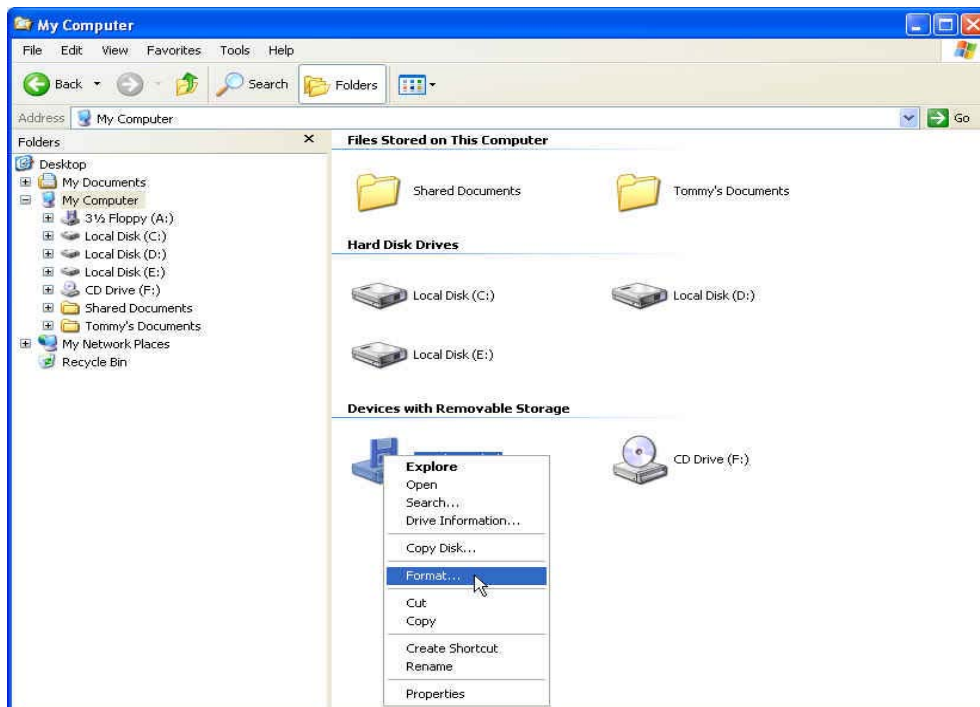
5. The following window will appear. **JetFlash** is now ready for use as an MS-DOS Boot Disk. Select **OK** to close the window.



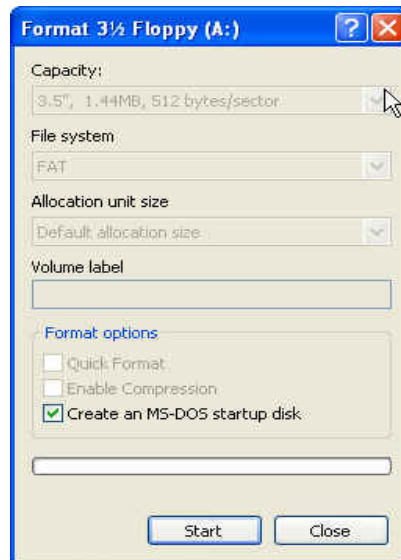
- ❖ When you have completed this process, your **JetFlash** will contain the files needed for the Boot-up function. Do not remove any of these files or else the Boot-Up function will fail.
- ❖ If **USB HDD** was selected, the **C:\>** prompt will appear after using the **JetFlash** to boot up. If **USB ZIP** was selected, the screen will show the **A:\>** prompt.

Boot-Up Function for Windows XP

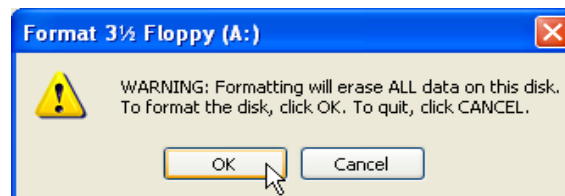
1. Insert a **new** floppy disk into the Floppy Disk Drive (A:). Go to the **My Computer** window and right click on the **Floppy Disk (A:)** icon. Select **Format...** from the pull-down menu.



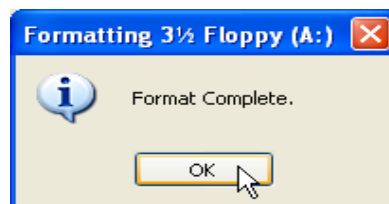
2. Select **Create an MS-DOS Startup Disk** then select **Start**.



3. Select **OK**.



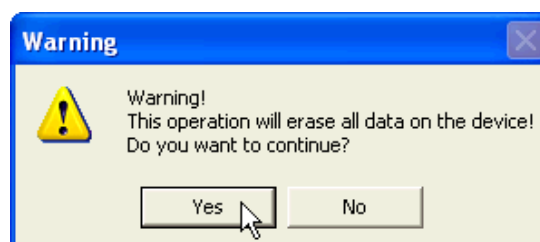
4. Select **OK** to complete the format.



5. Select the **Boot-Up** button in the **JF-Utility** window.



6. The following window will appear. Select **Yes** to continue or **No** to stop.

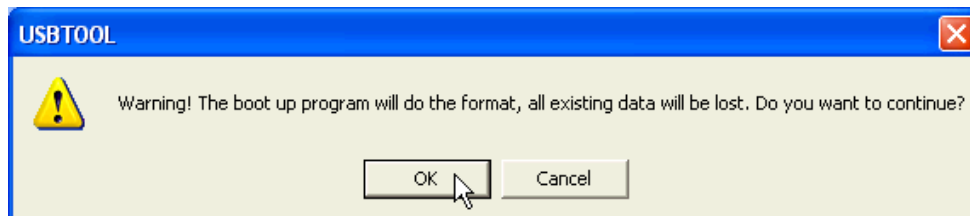


7. The **Create Boot Disk** window will appear. Select the **Create Boot Disk** button.

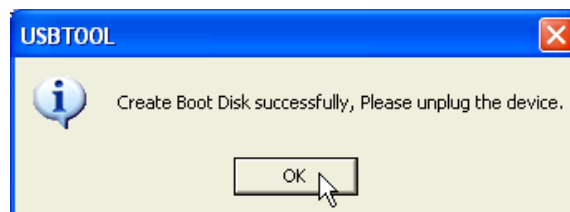


❖ The **USB-HDD** boot-up type is not supported in Windows XP.

8. The following message will appear. Select **OK** to continue or **Cancel** to exit.



9. The following window will appear. **JetFlash** is now ready for use as an MS-DOS Boot Disk. Select **OK** to close the window.



❖ When you have completed this process, **JetFlash** will contain the files needed to use the Boot-up function. Do not remove any of these files or else the Boot-Up function will fail.

Recovery Function

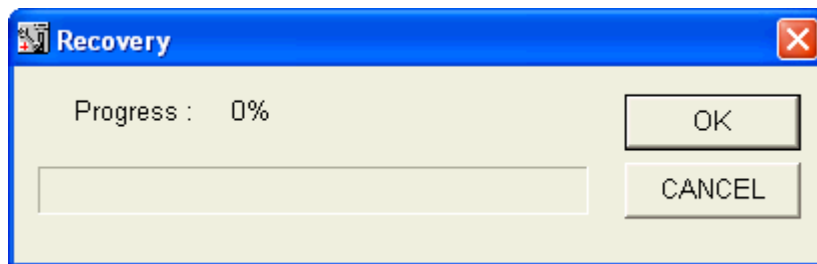
If your **JetFlash** is ever damaged, you can use the **Recovery** program to restore the unit's default settings. Before using the **Recovery** function, please read the following sections carefully.

- ❖ The Recovery function is not supported in the Mac or Linux Operating Systems.
- ❖ To use the Recovery function, you must login into the Windows OS with **Administrator** rights.
- ❖ Running the **Recovery** program will erase all of the data on your **JetFlash**.
- ❖ If there are bad blocks in the flash memory chip of the **JetFlash**, the memory size of **JetFlash** after running the Recovery program will be smaller than the original memory size.

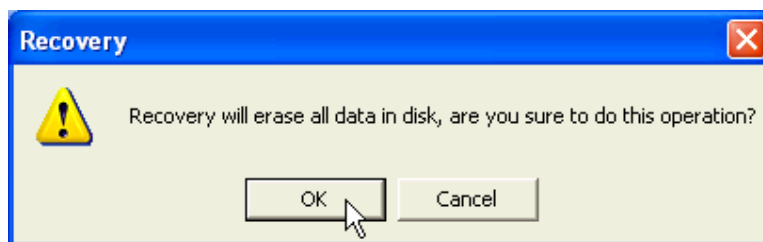
1. Put the Driver CD into the CD-ROM drive (Auto-Run supported). Plug your **JetFlash** into an available USB port, and select the **Recovery** button.



2. The following window will appear. Select **OK** to continue.

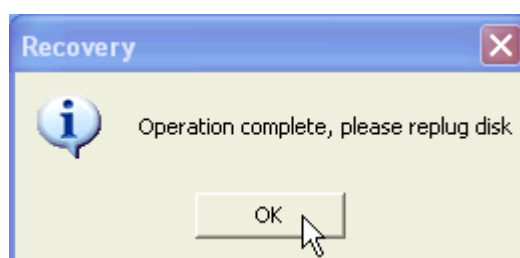


3. The following window will appear. Select **OK** to continue or **Cancel** to stop.




- ❖ The **Recovery** program will perform a low-level format on your **JetFlash**, erasing all of the data and returning **JetFlash** to the default configuration.

4. When finished, the following message will appear. Select **OK** and unplug your **JetFlash**. Re-insert the **JetFlash** to continue using it.



Remove JF-Utility


When the **JF-Utility.EXE** file is executed, the  icon remains in the system tray. If you do not want to use this JF-Utility anymore, right click the icon and select **exit** to remove the JF-Utility.

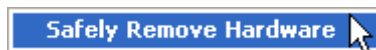
Safely Remove Your JetFlash

Remove JetFlash in Windows 98SE

Unplug **JetFlash** from your system directly when data is not transferring.

Remove JetFlash in Windows Me, 2000, and XP

1. Select the  icon on the system tray.
2. The **Safely Remove Hardware** pop-up menu will appear. Select to continue.



3. Follow the on-screen instructions to complete the procedure.
4. The **Safe To Remove Hardware** message balloon will appear. **JetFlash** is now ready to be unplugged.



Remove JetFlash in Mac OS

Drag and drop the Disk icon corresponding to your **JetFlash** into the trashcan. Then unplug your **JetFlash** from the USB port.

Remove JetFlash in Linux

Unmount the device from the Linux environment.

Example: `umount /mnt/jetflash`



Before removing your **JetFlash**, please make sure the LED is **on** and **Not flashing!**

If you remove the **JetFlash** while the LED is flashing, unpredictable damage may occur to the files and/or to your **JetFlash** due to a write cache fault.

Troubleshooting

If an error occurs, first check the points listed below before taking your JetFlash for repair. If you are unable to remedy a problem from the following hints, please consult your dealer or service center.

Driver CD cannot auto-run in Windows

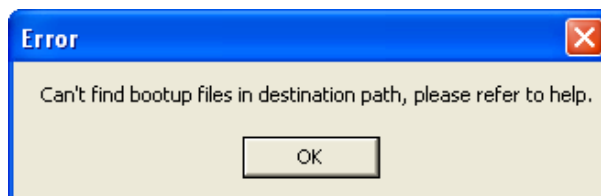
Enter **Device Manager** in the **Control Panel** and enable the **Auto-Insert** function for the CD-ROM drive. Alternatively, you can execute the **JetFlash.EXE** file in the driver CD manually.

Operating system cannot detect JetFlash

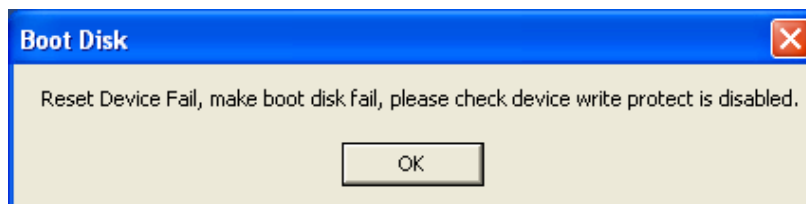
Check the following:

1. Is your **JetFlash** properly connected to the USB port? If not, unplug it and plug it in again.
2. Is your **JetFlash** connected to the Mac keyboard? If yes, unplug it and plug it into an available USB port on your Mac Desktop instead.
3. Is the USB port enabled? If not, refer the user's manual of your computer (or motherboard) to enable it.
4. Is the necessary driver installed? If your computer is equipped with Windows 98SE, you must insert the Driver CD into the CD-ROM and refer to the "[Driver Installation for Windows 98SE](#)" section to complete the driver installation before using your **JetFlash**.

Boot-Up Function Error Messages



The initialization of the Boot-up Function or installation of the OS is probably incomplete. Please make sure that the path **C:\WINDOWS\COMMAND\EBD** exists in Windows 98SE, Me. If yes, return to step 1 to re-initialize the Boot-up function. If this fails, the Boot-up function is not supported by your computer operating system.



Cannot find the file that was just copied to the JetFlash

Re-copy the file and refer to the "[Safely Remove Your JetFlash](#)" section to remove the **JetFlash** after the copy process is completed.

File that was just deleted still appears

Re-delete the file and refer to the "[Safely Remove Your JetFlash](#)" section to remove the **JetFlash** after the delete process is completed.

JF-Utility (JF-Utility.EXE file) cannot be executed



You must login into the Windows OS with Administrator rights to execute this file.

Specifications

- Size: 64mm x 21mm x 10mm

- Weight: 11 g

- Data Retention: Up to 10 years

- Erase Cycles: > 100,000 times

- Certificates: CE, FCC, BSMI

Ordering Information

Transcend P/N	Memory Size	Features
TS128MJF110	128MB	Yellow
TS256MJF110	256MB	Green
TS512MJF110	512MB	Blue
TS1GJF110	1GB	Red
TS2GJF110	2GB	Gray

JetFlash Limited Warranty

“Above and beyond” is the standard we set for ourselves for customer service at Transcend. We consistently position ourselves to be significantly above the industry norm. It’s all part of our commitment to Customer Satisfaction.

All Transcend Information, Inc. (Transcend) products are warranted and tested to be free from defects in material and workmanship and to conform to the published specifications. Should your Transcend JetFlash malfunction during normal use in its recommended environment due to improper workmanship or materials within the warranty period, Transcend will repair or replace your product with a comparable product. This warranty is subject to the conditions and limitations set forth herein.

Duration of Warranty: Transcend’s JetFlash is covered by this warranty for a period of two (2) years from the date of purchase. Transcend will inspect the product and make the determination as to whether the product is eligible for repair or replacement. The decision by Transcend regarding eligibility of the product for repair or replacement will be final and binding. Transcend reserves the right to provide a functionally equivalent, refurbished replacement product.

Limitations: This warranty does not apply to products that fail due to accident, abuse, mishandling, improper installation, alteration, acts of nature, improper usage, or problems with electrical power. Transcend’s JetFlash must be used with devices that conform to the recommended industry standards. Transcend will not be liable for damages resulting from a third-party device that causes the Transcend product to fail. Transcend shall in no event be liable for any consequential, indirect, or incidental damages, lost profits, lost business investments, lost goodwill, or interference with business relationships as a result of lost data. Transcend is also not responsible for damage or failure of any third-party equipment, even if Transcend has been advised of the possibility. This limitation does not apply to the extent that it is illegal or unenforceable under applicable law.

Disclaimer: The foregoing limited warranty is exclusive, with no other warranties, implied or statutory, including but not limited to any implied warranty of merchantability or fitness for a particular purpose. This warranty is not affected in any part by Transcend’s providing technical support or advice.

Online Registration: To expedite the warranty service, please register your Transcend Product within 30 days of purchase.

Register online at <http://www.transcendusa.com/registration>

Transcend

*Your Supplier, Your Partner,
Your Friend.*

Transcend Information, Inc.

www.transcendusa.com

The Transcend logo is a registered trademark of Transcend Information, Inc.

*All logos and marks are trademarks of their respective companies.